

EXPLORE MORE

Beyond the Castle Gardens we have created a network of walking trails for you to explore. Look out for red deer roaming the hillside, buzzards and golden eagles soaring above, and otters at play on the shore.

TAKE IN THE VIEW

On the trails you'll enjoy magnificent views over the Sound of Sleat towards the mainland hills of Glenelg and Knoydart. From Cnoc Armadail (Armadale Hill), the magnificent panorama also includes glimpses of the Cùillin Ridge to the north.



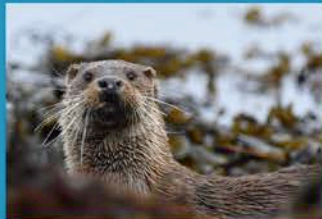
To Cnoc Armadail / Knock Armadale hilltop view 0.8 km / 0.5 miles

THE GARDEN OF SKYE

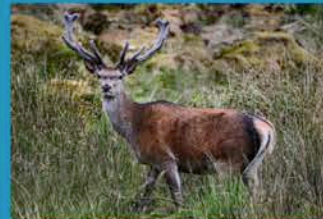
Our area, the Sleat Peninsula, is often known as 'the Garden of Skye'. With lush vegetation, rocky shorelines and sandy beaches, it's home to some of Skye's most beautiful scenery. The area also has a rich cultural heritage and a wealth of attractions and activities to discover. Find out more at www.sleatperfectlyskye.com



Golden Eagle



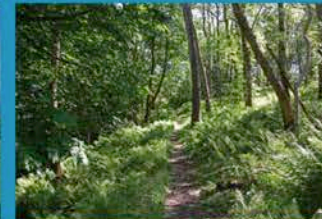
Otter



Red Deer



View from Red Trail



Explore our woodlands

WALKING TRAILS KEY

- Red trail 2.4 km / 1.5 miles (1 hour)
- Blue trail 2.7 km / 1.7 miles (1 hour)
- Access to trails
- Cnoc Armadale 1.6 km / 1 mile return (45 mins)
- Woodland walks

Paths are uneven and can be muddy. Please wear stout footwear.

